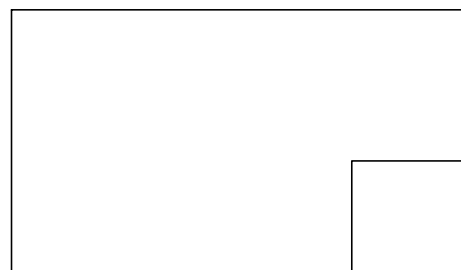
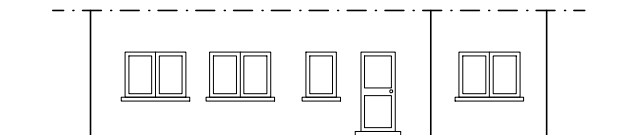
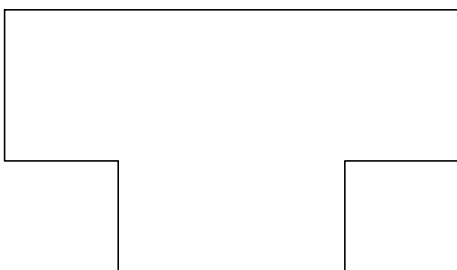
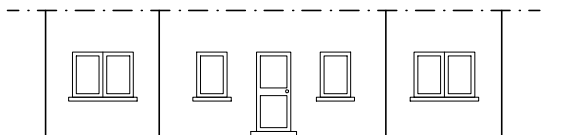
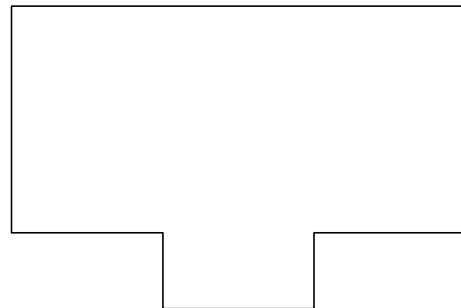
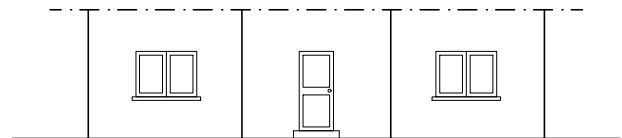
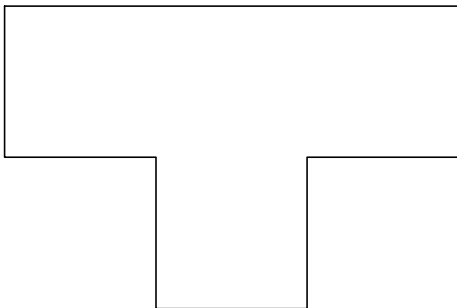
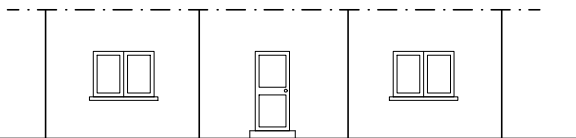
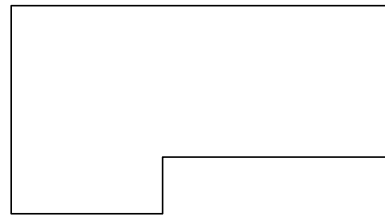
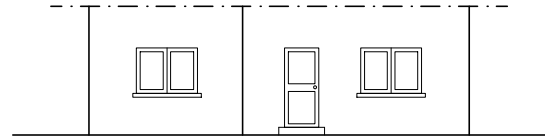
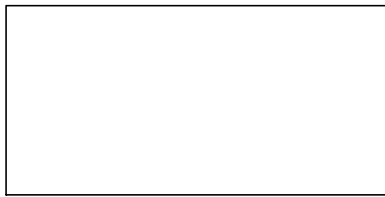
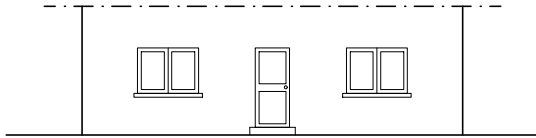
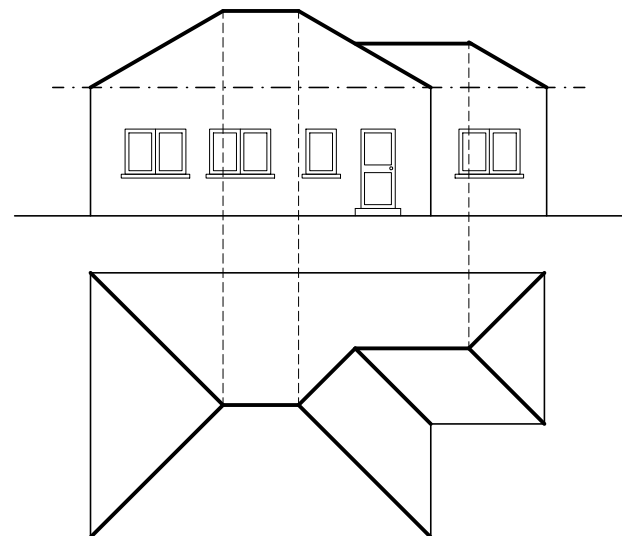
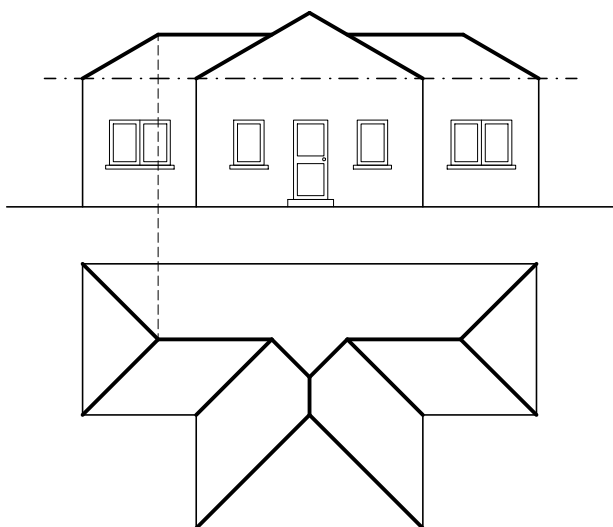
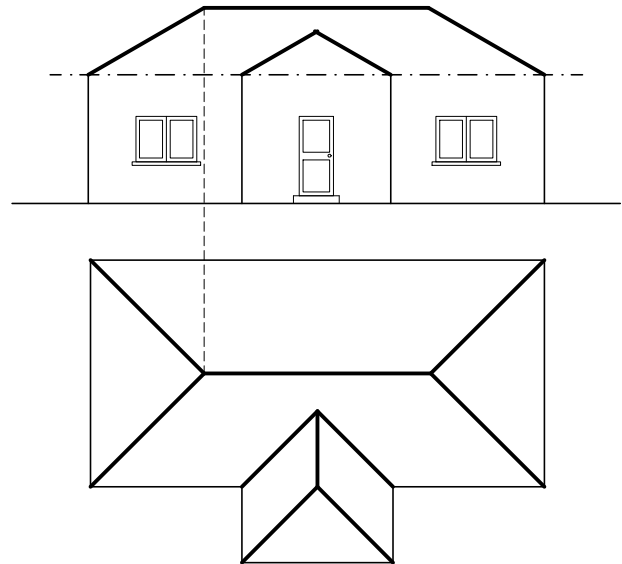
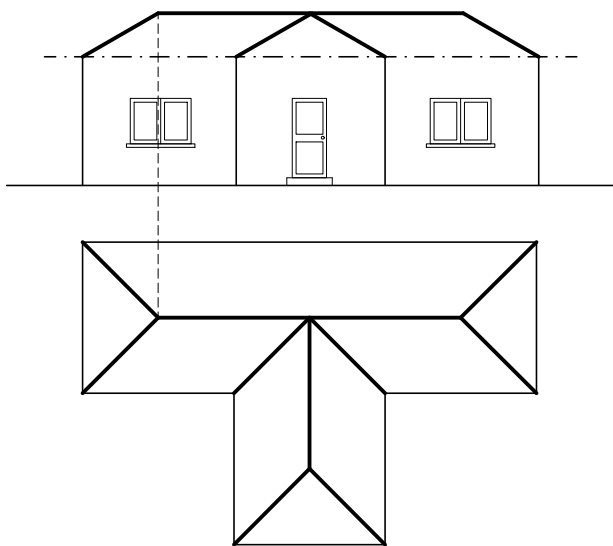
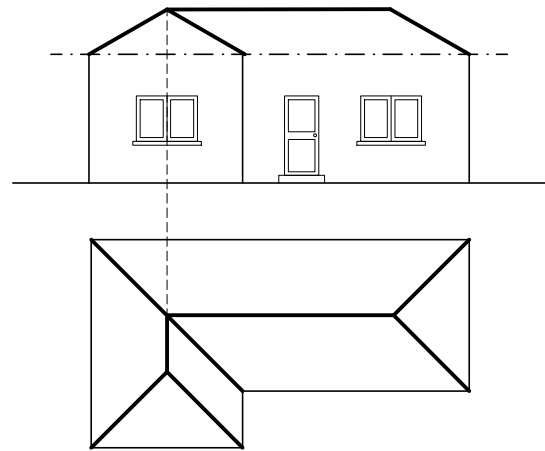
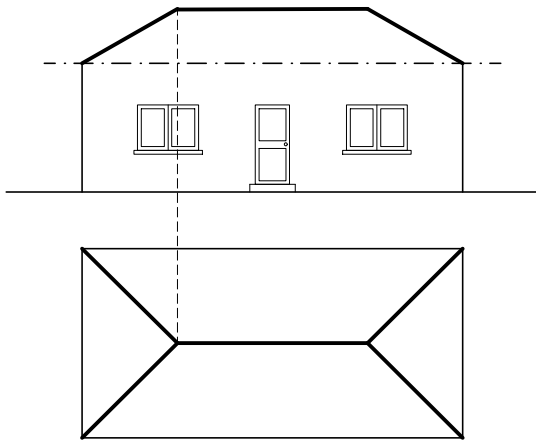


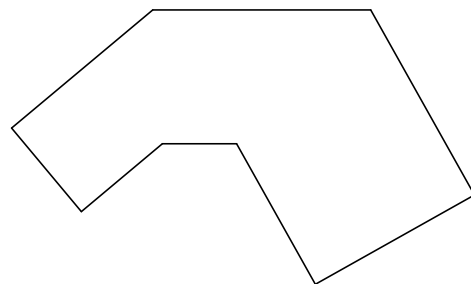
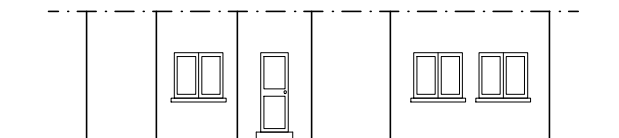
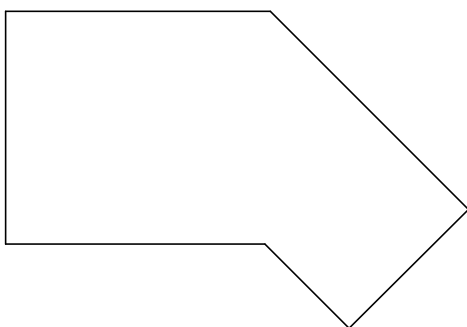
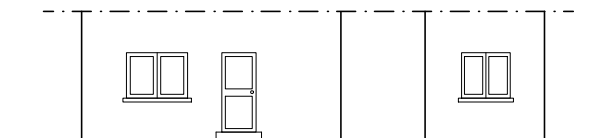
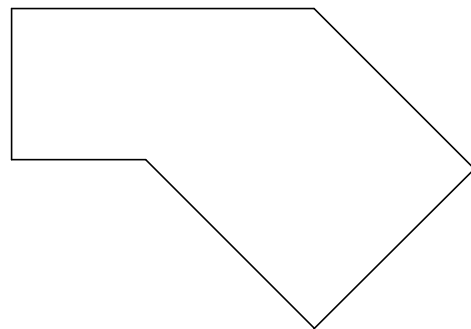
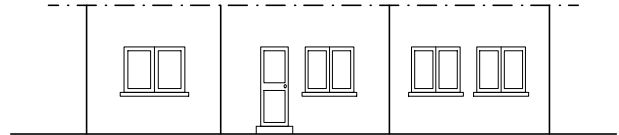
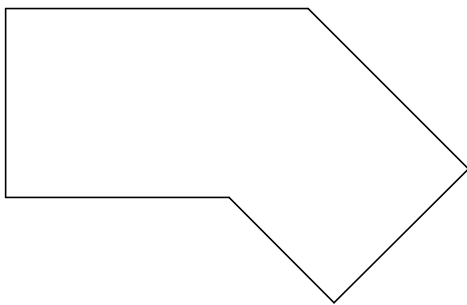
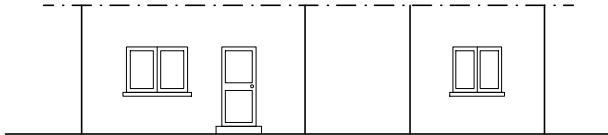
1. Completar la planta y el alzado de la cubierta determinando las intersecciones de los planos que la constituyen.
Todas las vertientes forman ángulos de 30° con el plano horizontal.



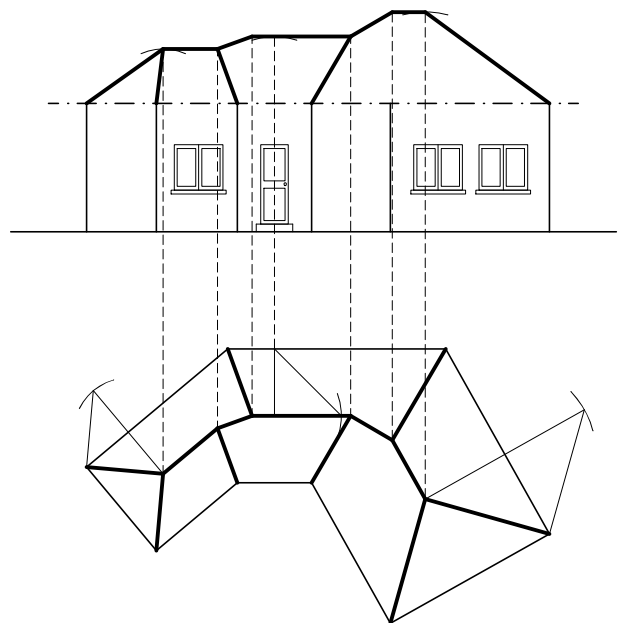
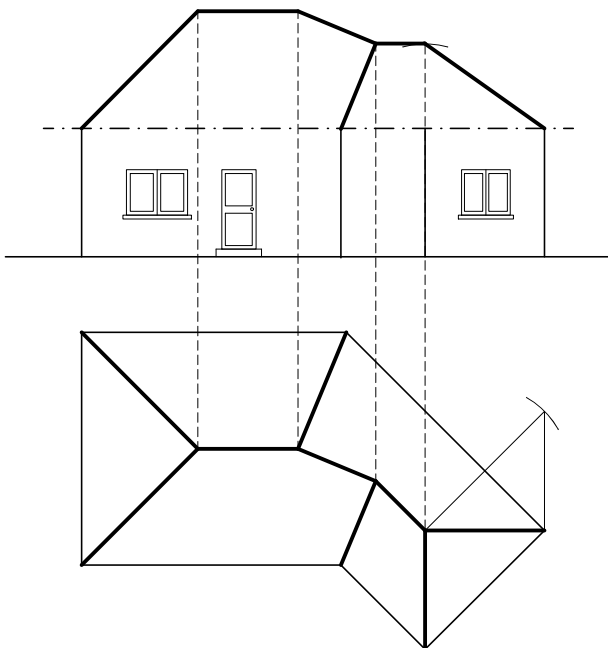
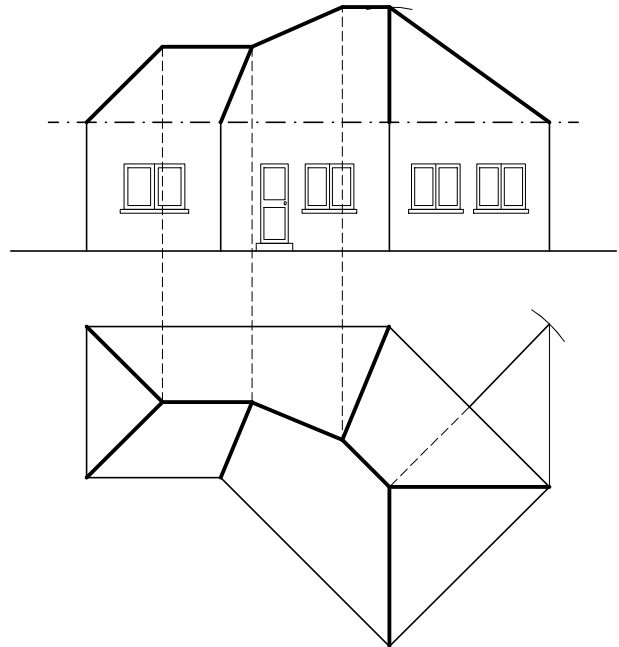
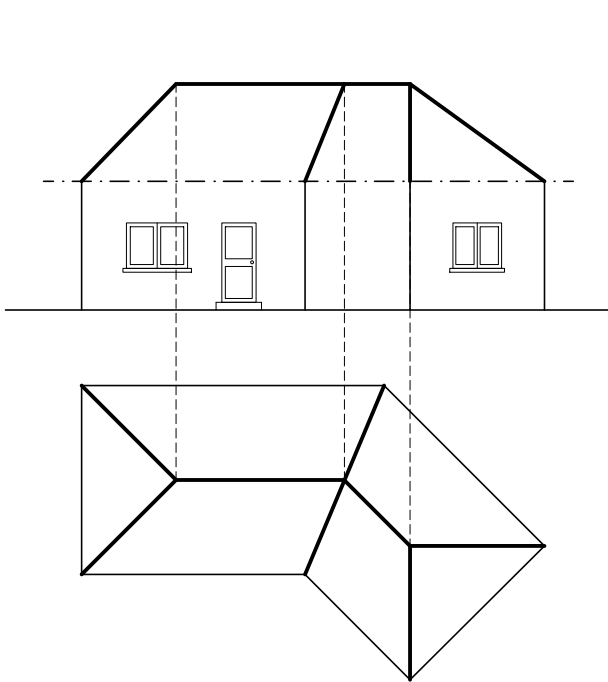
1. Completar la planta y el alzado de la cubierta determinando las intersecciones de los planos que la constituyen.
Todas las vertientes forman ángulos de 30° con el plano horizontal.



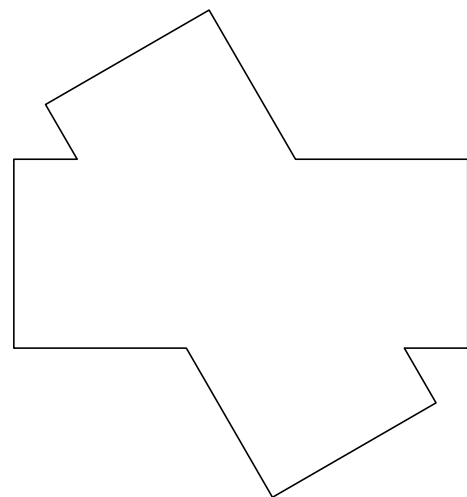
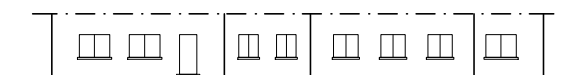
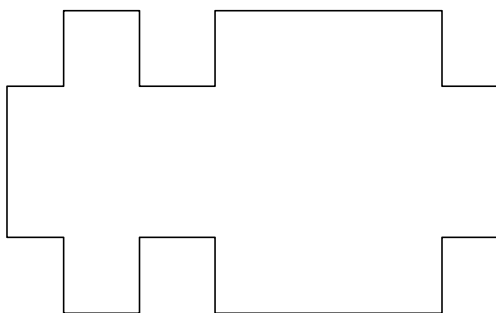
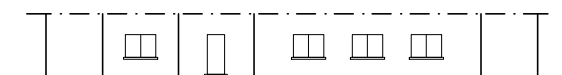
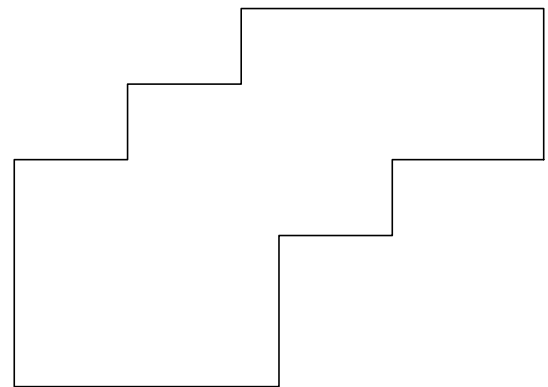
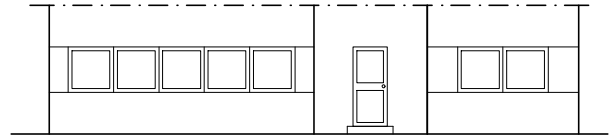
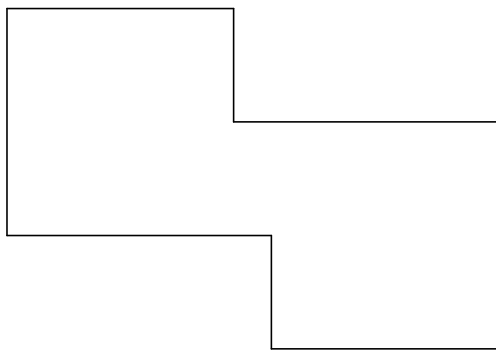
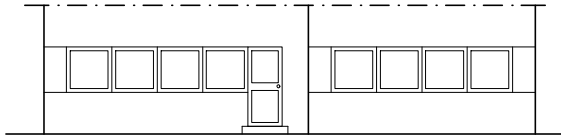
1. Completar la planta y el alzado de la cubierta determinando las intersecciones de los planos que la constituyen.
Todas las vertientes forman ángulos de 45° con el plano horizontal.



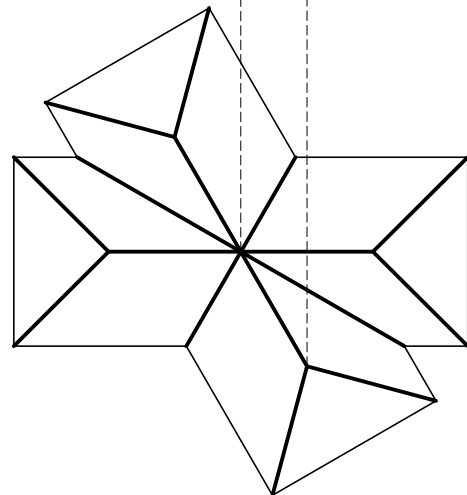
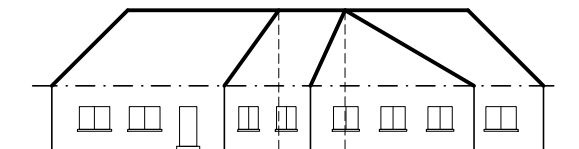
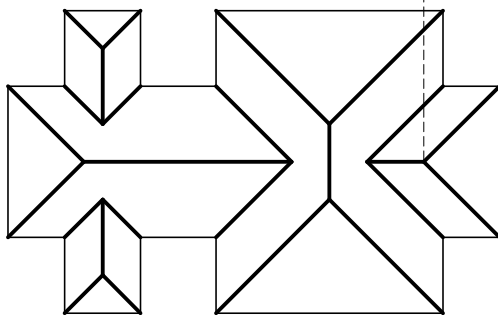
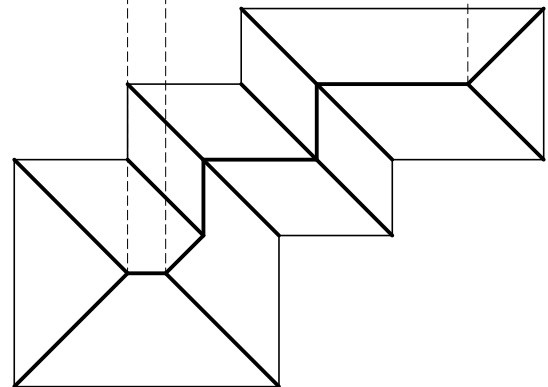
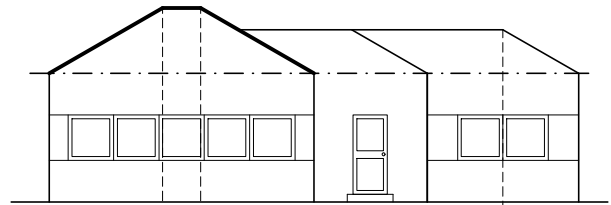
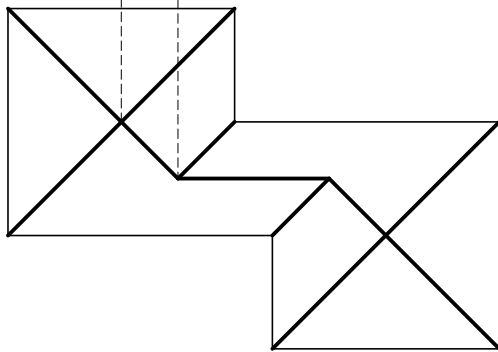
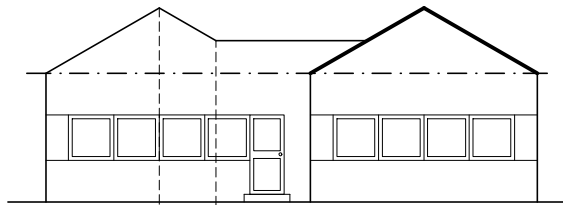
1. Completar la planta y el alzado de la cubierta determinando las intersecciones de los planos que la constituyen.
Todas las vertientes forman ángulos de 45° con el plano horizontal.



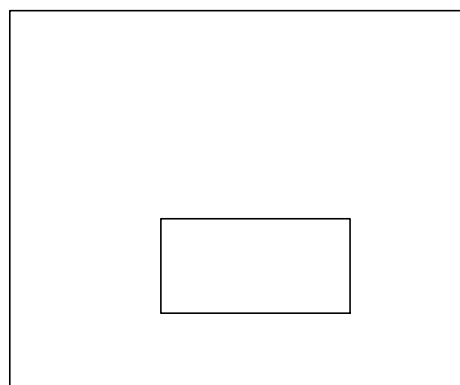
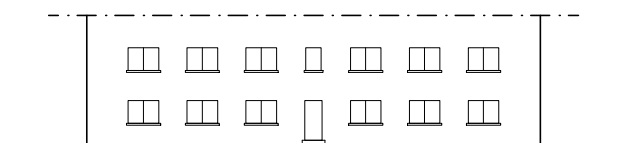
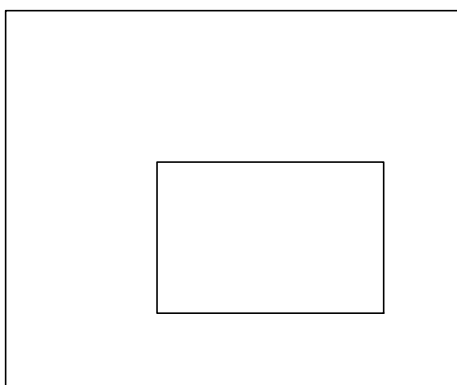
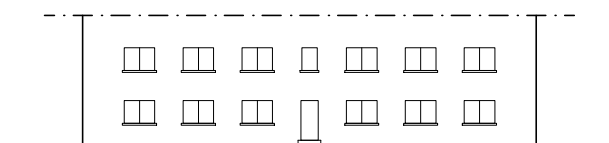
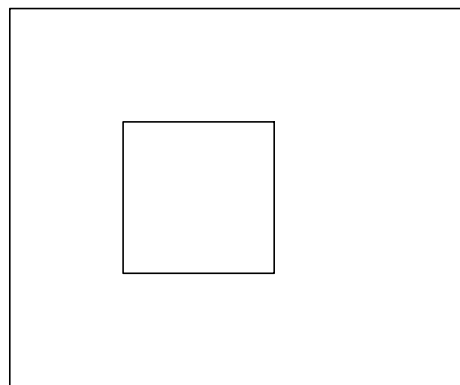
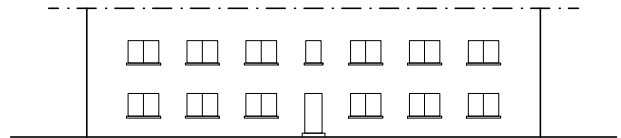
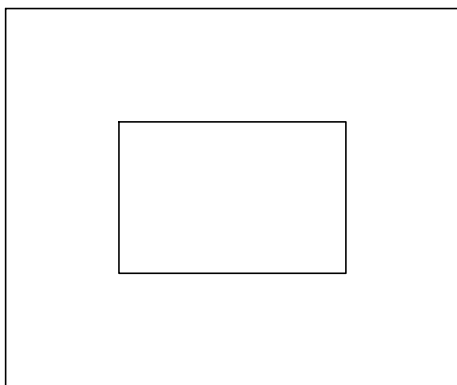
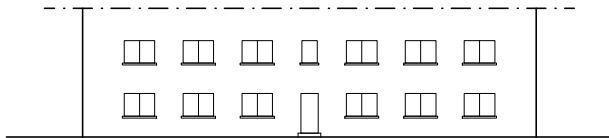
1. Completar la planta y el alzado de la cubierta determinando las intersecciones de los planos que la constituyen.
Todas las vertientes forman ángulos de 45° con el plano horizontal.



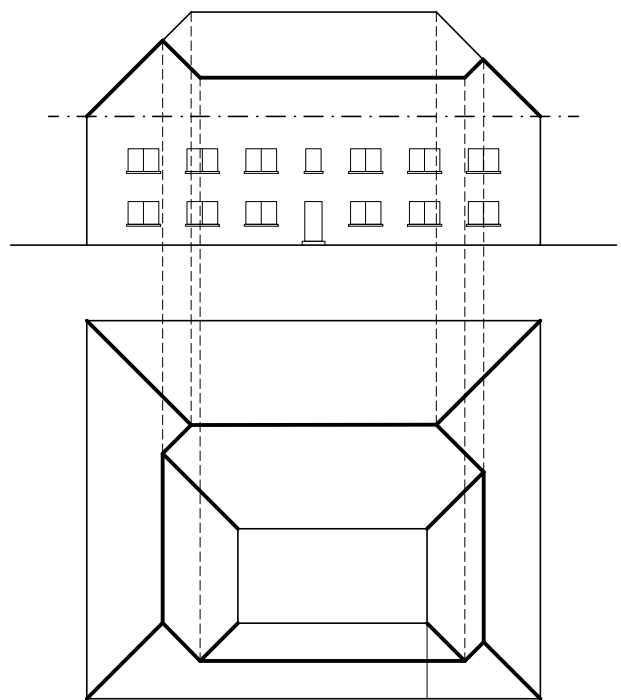
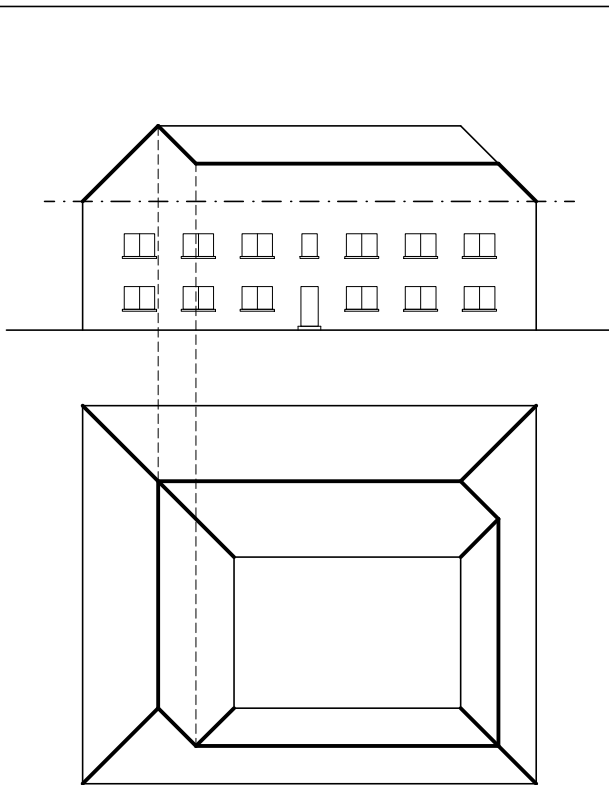
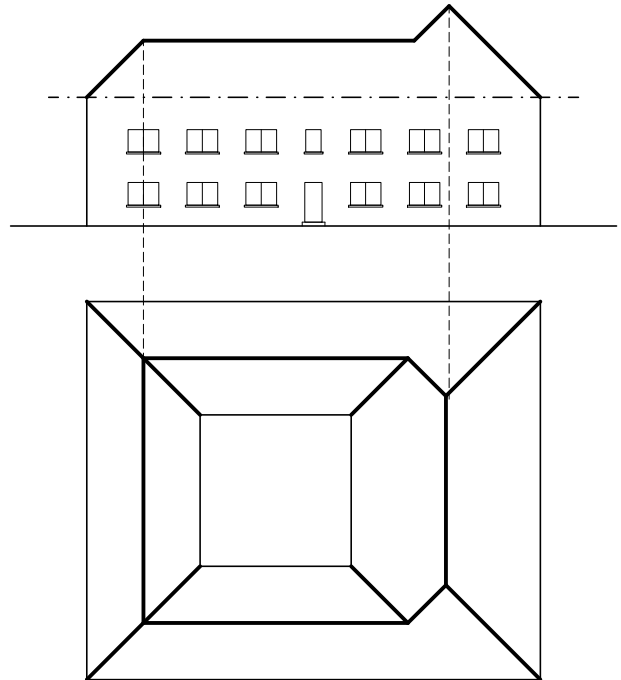
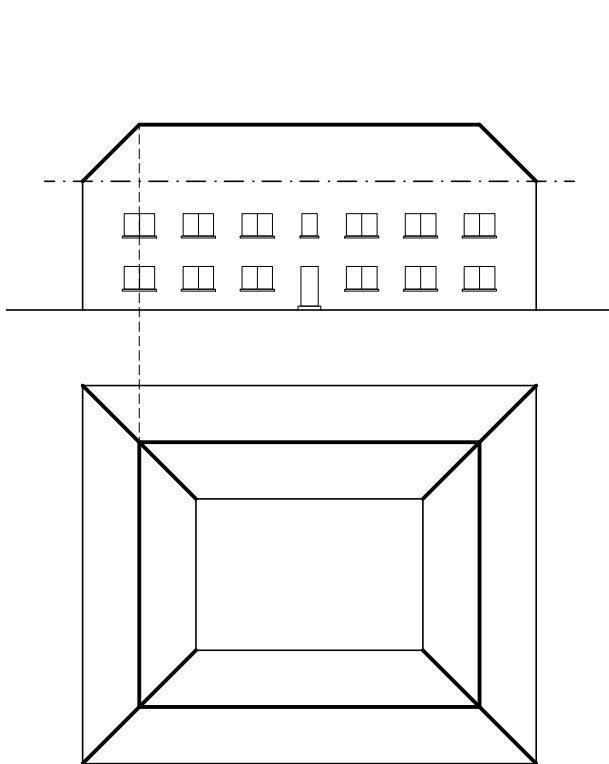
1. Completar la planta y el alzado de la cubierta determinando las intersecciones de los planos que la constituyen.
Todas las vertientes forman ángulos de 45° con el plano horizontal.



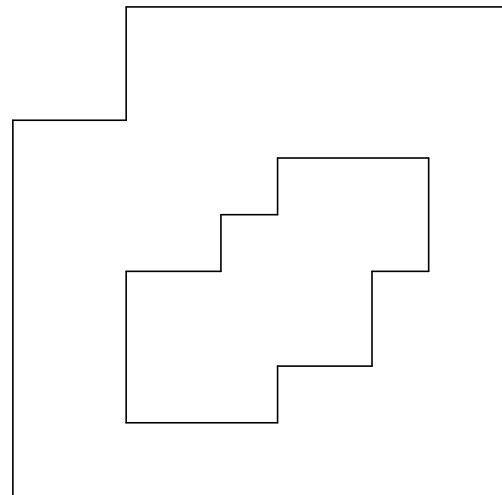
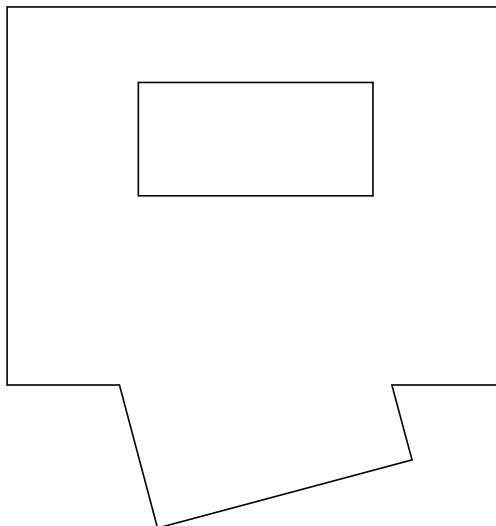
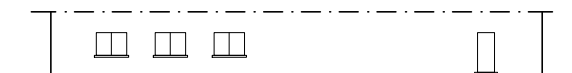
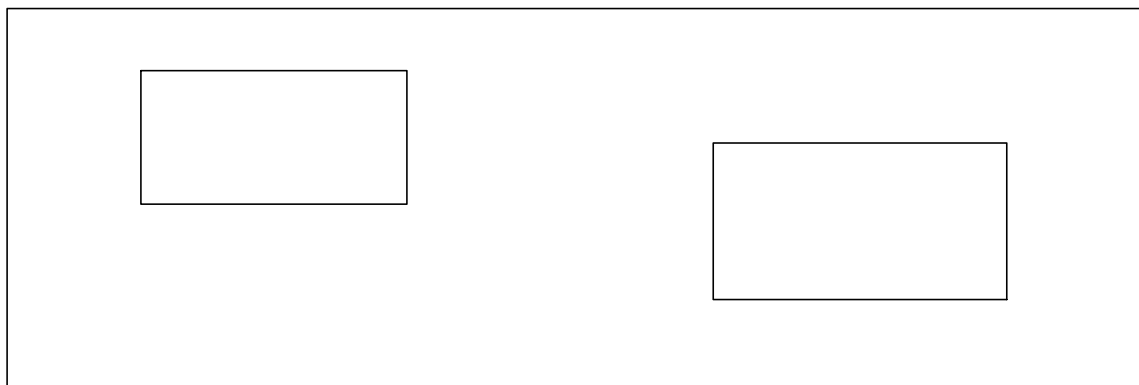
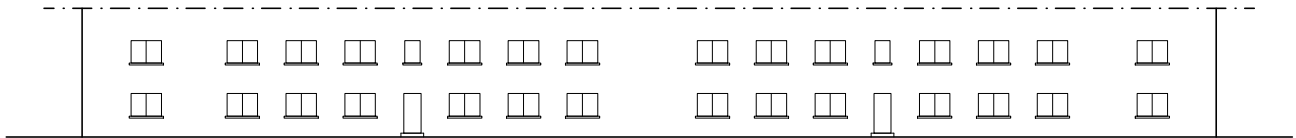
1. Completar la planta y el alzado de la cubierta determinando las intersecciones de los planos que la constituyen.
Todas las vertientes forman ángulos de 45° con el plano horizontal.



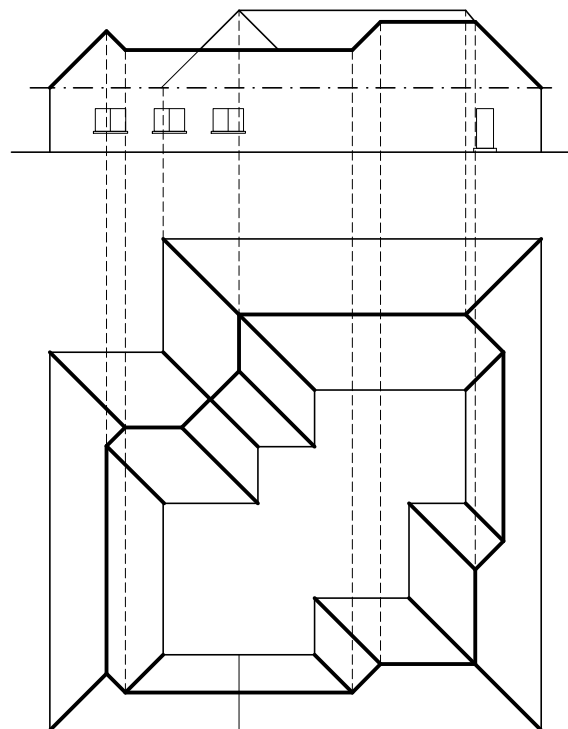
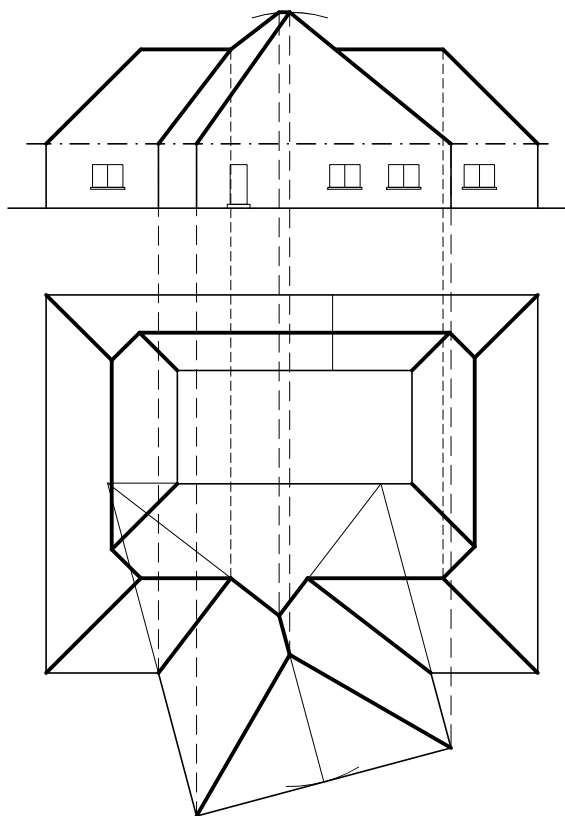
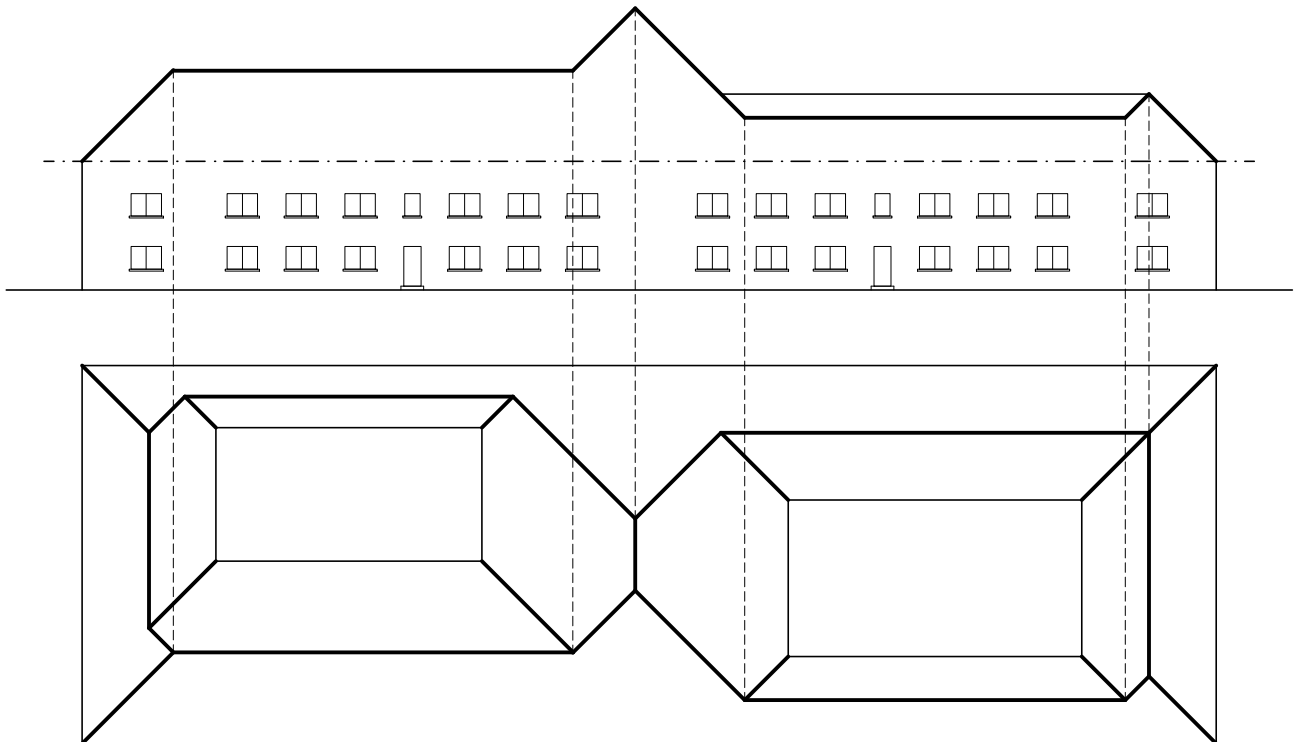
1. Completar la planta y el alzado de la cubierta determinando las intersecciones de los planos que la constituyen.
Todas las vertientes forman ángulos de 45° con el plano horizontal.



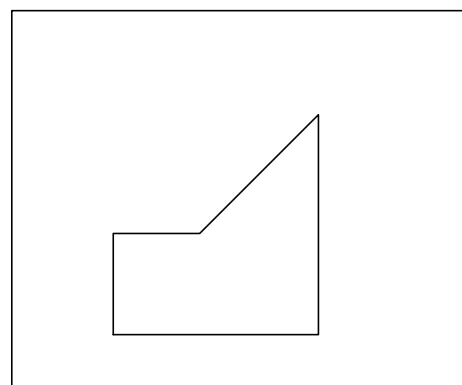
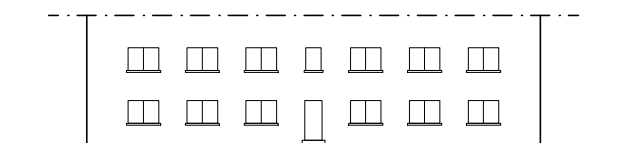
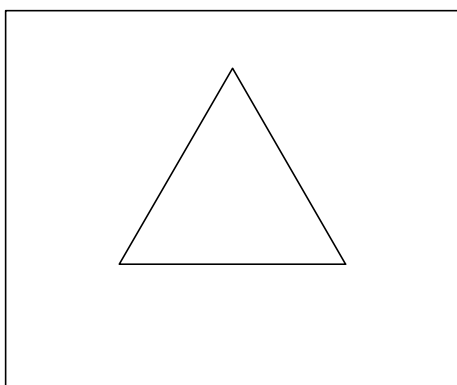
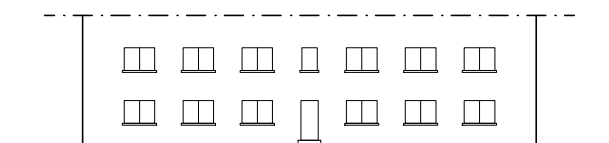
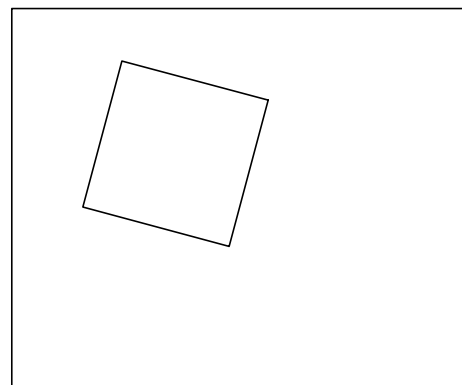
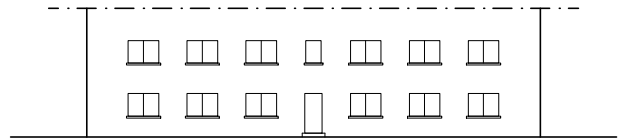
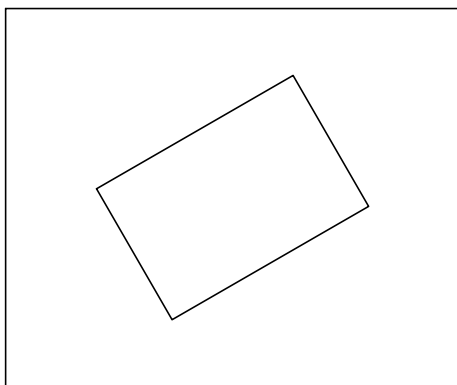
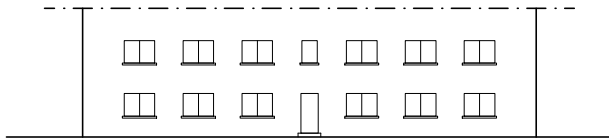
1. Completar la planta y el alzado de la cubierta determinando las intersecciones de los planos que la constituyen.
Todas las vertientes forman ángulos de 45° con el plano horizontal.



1. Completar la planta y el alzado de la cubierta determinando las intersecciones de los planos que la constituyen. Todas las vertientes forman ángulos de 45° con el plano horizontal.



1. Completar la planta y el alzado de la cubierta determinando las intersecciones de los planos que la constituyen.
Todas las vertientes forman ángulos de 45° con el plano horizontal.



1. Completar la planta y el alzado de la cubierta determinando las intersecciones de los planos que la constituyen.
Todas las vertientes forman ángulos de 45° con el plano horizontal.

